

Recycle and reuse an entire building

Magnus Tengberg
Head of Real Estate Development, Gothenburg Region

Vasakronan



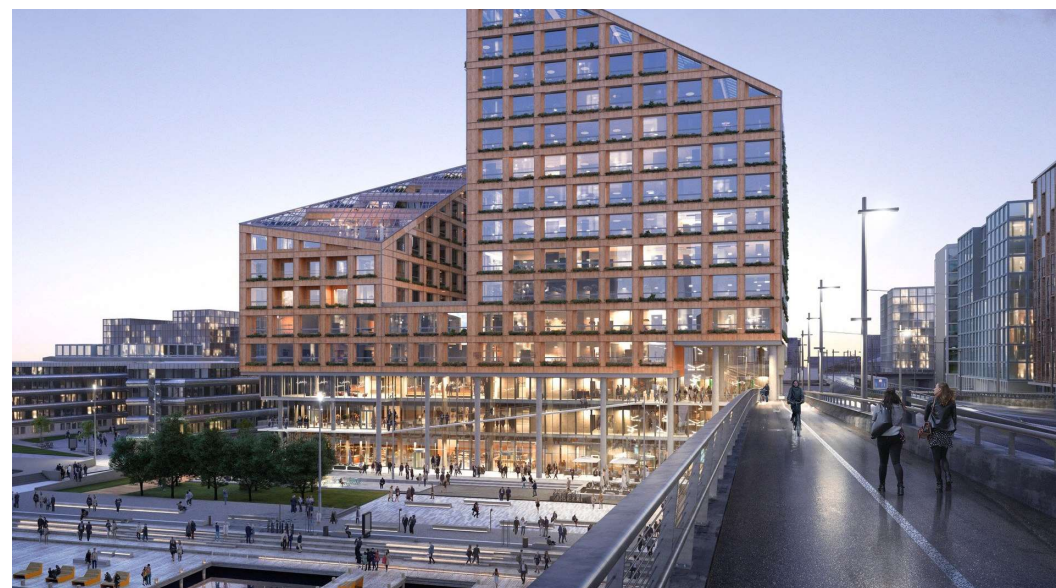
Kromet

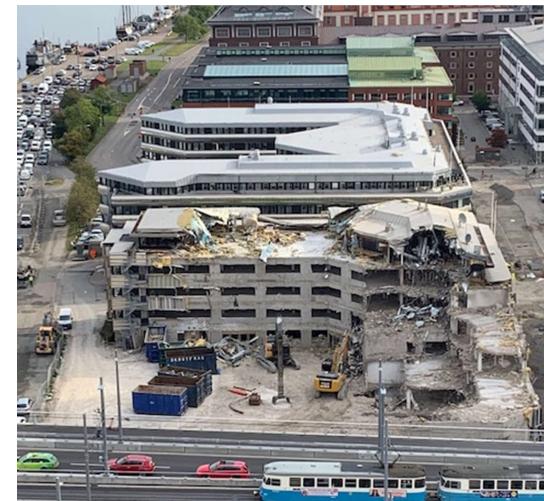
Lilla Bommen Gothenburg

- Officebuilding
- Construction year 1985/86
- Area 11 000 sqm
- Concrete structure



Kromet





Long term goals

Environment

Our entire value chain will be climate neutral by 2030

Our properties are self-sufficient and do not require any energy to be purchased

Our business and those of our customers generate no waste that is not possible to recycle or reuse

We only use renewable, recycled or reused materials in our construction projects



Vision



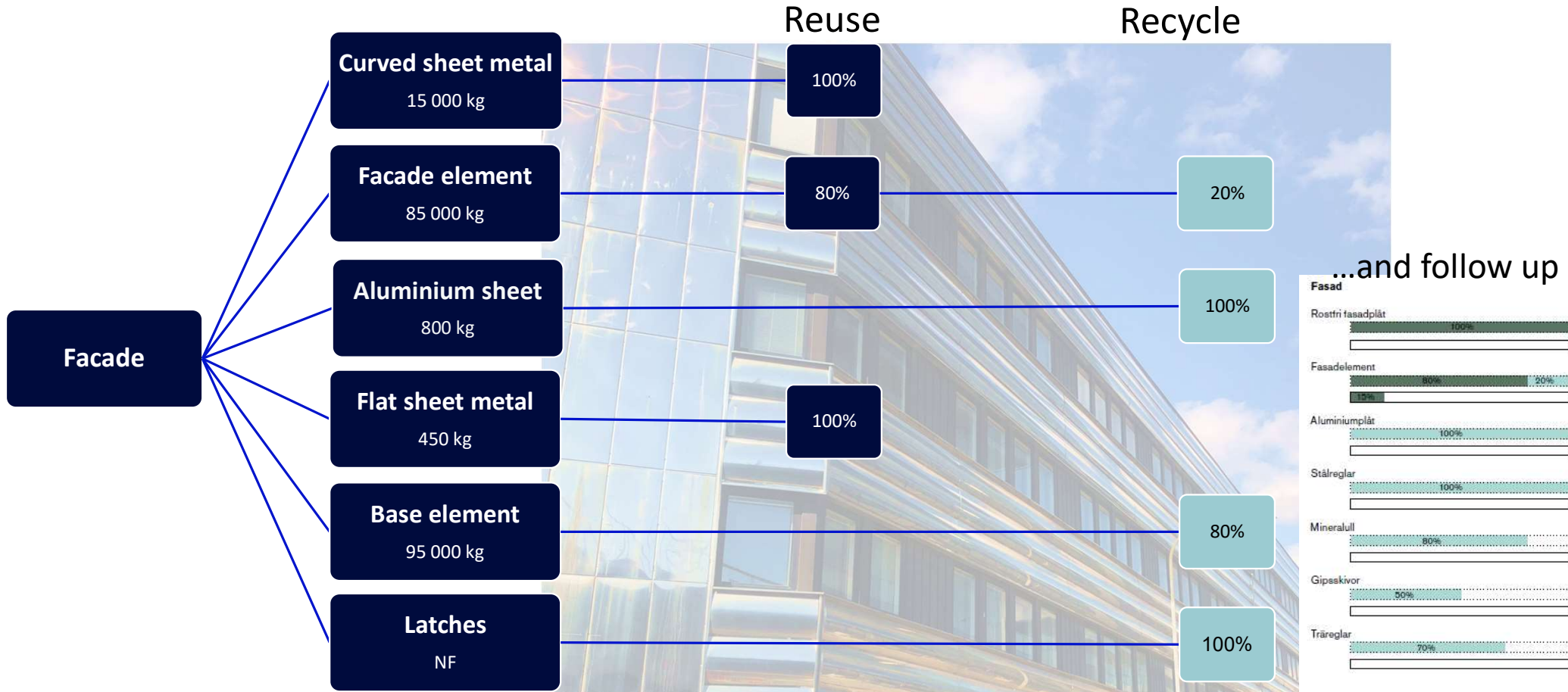
"We decided to make Kromet Vasakronan's largest recycling and recycling project ever. The goal is 100%, ie no material should be wasted. "

How to start?

- Plan for recycling –consider time
- Goals for your project –communicate
- Learn to know your project
 - Inventory -when and what
- Procurement of contractor
 - Contractors knowledge on "re:subject"
 - Are they used to dealing with reused buildingmaterials
 - Warehouse for recycling?
- Tools for prioritization and calculation



Example Break down goal



Communicate results

-Example reused materials

- 2.000 sqm facade sheet
- ca 150 m² facade element
- 160 windows
- 200 doors
- 300 interior glass sections
- 4 entrance doors
- 2400 sqm ceiling tiles
- 1350 m² flooring textile
- 50 st kitchen cabinets
- Staircases

- 400 m cable ladders
- 60 toilet units of wc-porslin

Taps, pumps cooling baffles, ventilation ducts, silencer, lighting fixtures, wall socket, switches, motion monitors etc etc.....



Communicate results

-Example recycled materials

- Gypsum in interior walls -> new gypsum boards
- Insulation in interior walls -> lösull
- Floor tiles, textile -> new floor tiles
- Metal recycling (reinforcement, roofing sheets, suspended ceilings, ventilation ducts, radiators, etc.)
- The concrete construction and slabs for ballast in new concrete for the new building on site
- Glass recycling (non-recycled windows)
- Plastic recycling (drain pipes, plastic mats)



Insights building material

Hard to dismantle:

- Steel fram/construction
- Roofing, metal sheets
- Sandwich elements facade/roof

Hard to reuse:

- 35-year-old installations, such as ventilation ducts, radiators, window sill ducts.
- 35 year old windows

Difficult to recycle:

- Wood products





Reuse of building material
an example

“Reuse and recycle an entire building, is it possible?”



Thank you!

Magnus Tengberg
magnus.tengberg@vaskronan.se

Vasakronan