

# DAGUR GRÆNNI BYGGÐAR

Hvatar frá ólíkum sjónarhornum sem stuðla að grænni byggð

September 2021

**2010**

**„Eigum við framtíð“**

**NEI**



NATURAL HISTORY MUSEUM

© The Trustees of the Natural History Museum, London

A low-angle photograph of the Natural History Museum in London, showing its two prominent towers and the central entrance. The building is made of light-colored stone with intricate Gothic-style architectural details. A flag flies from a tall pole in the center. The sky is blue with some clouds. The year '2017' is overlaid in white text in the center of the image.

2017

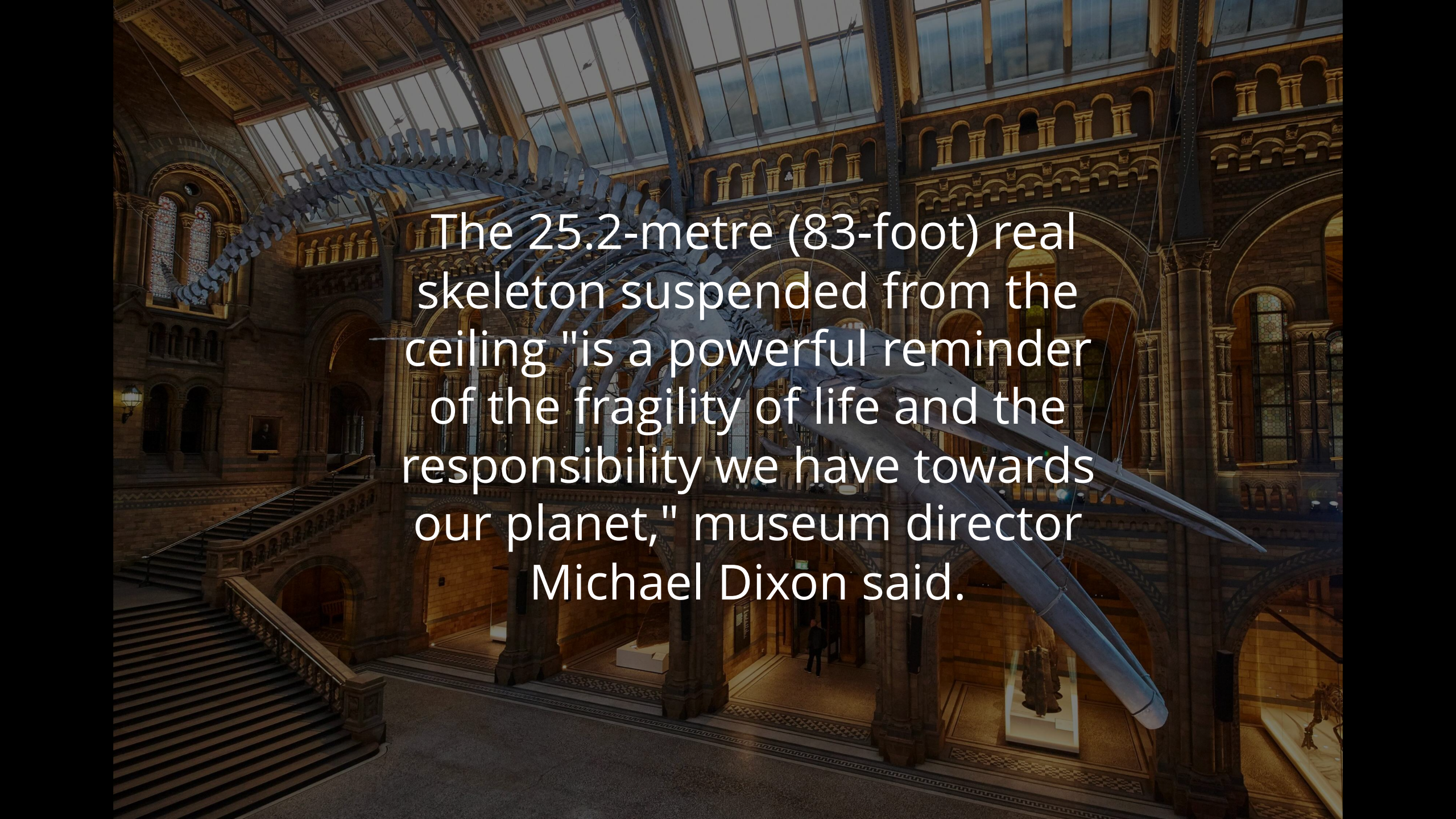
NATURAL HISTORY MUSEUM

© The Trustees of the Natural History Museum, London







A large, detailed skeleton of a blue whale is suspended from the ceiling of a grand, ornate museum hall. The skeleton is a deep blue color and is positioned horizontally, stretching across the width of the hall. The museum's architecture features high ceilings with large glass skylights, arched windows, and multiple levels of galleries. A wide staircase is visible on the left side of the image. The overall atmosphere is one of historical grandeur and scientific discovery.

The 25.2-metre (83-foot) real skeleton suspended from the ceiling "is a powerful reminder of the fragility of life and the responsibility we have towards our planet," museum director Michael Dixon said.





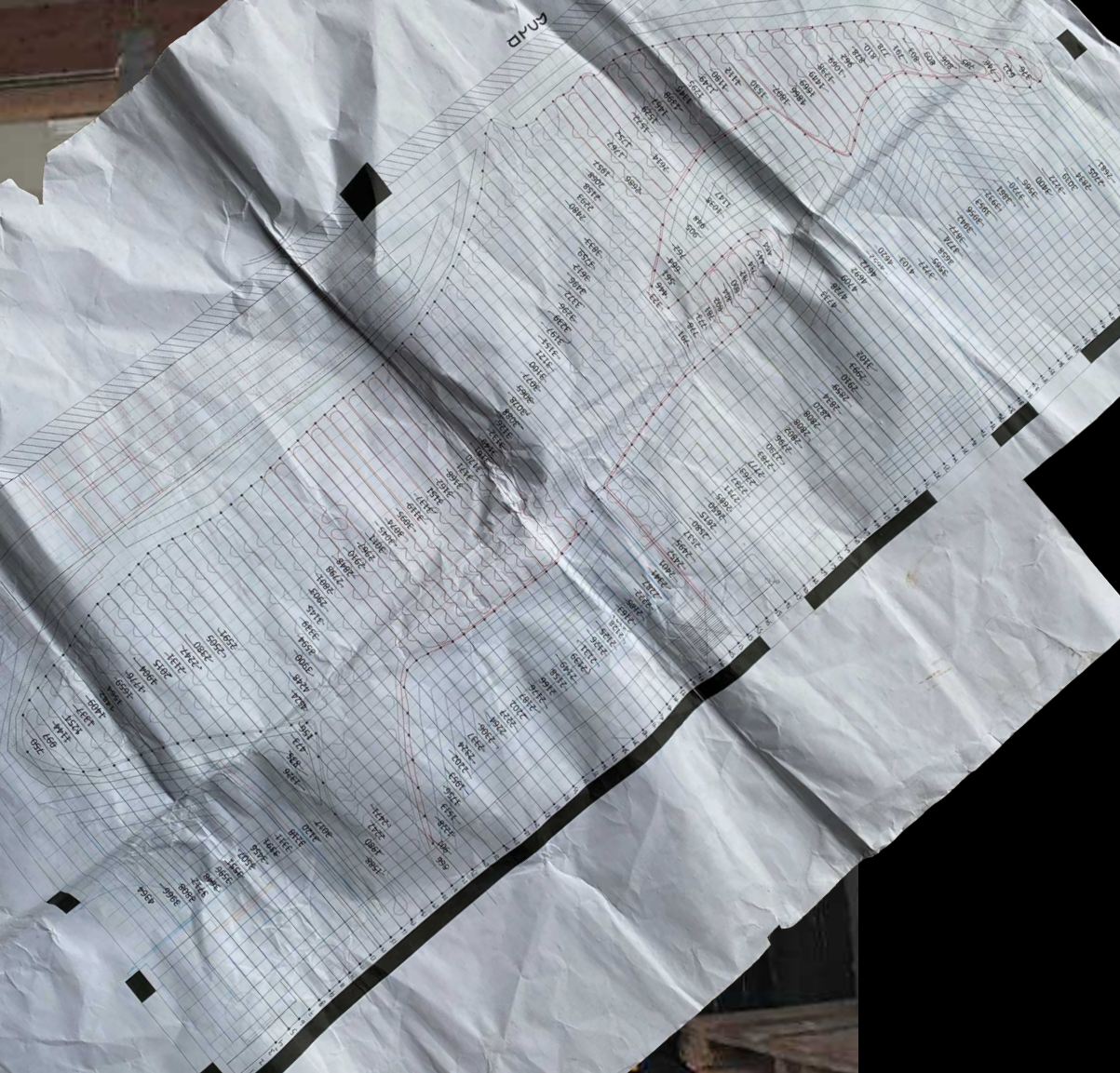
2017





FLOOR PLAN

FLOOR PLAN



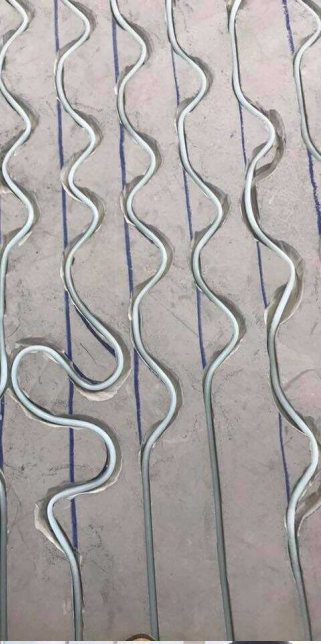
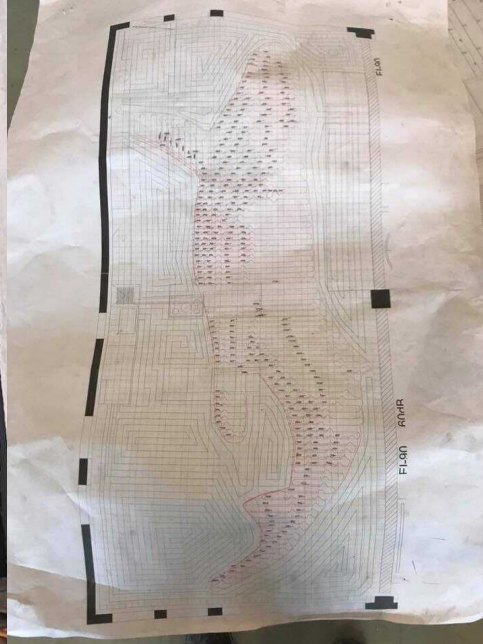


FLOOR PLAN

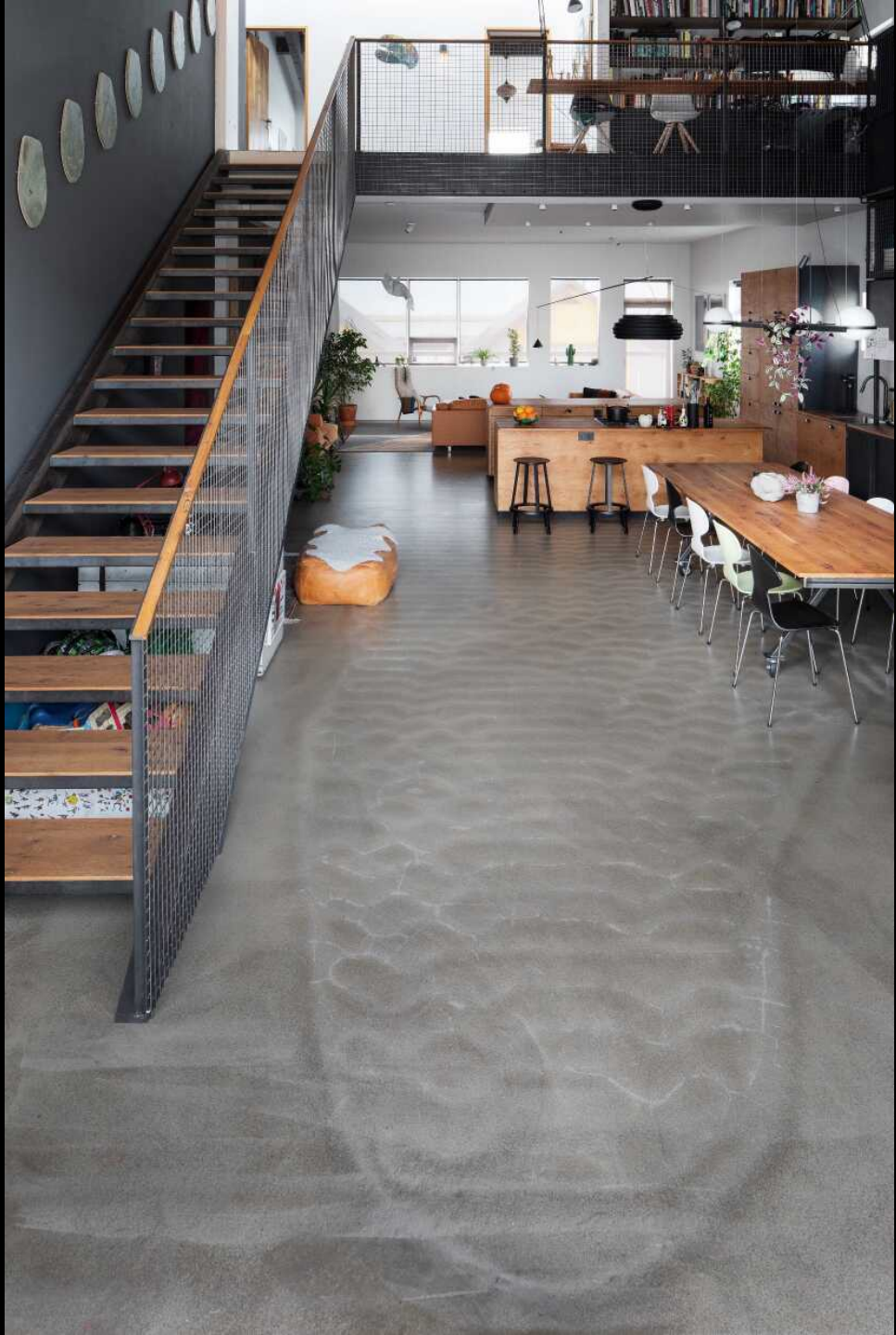
FLOOR PLAN

FLOOR PLAN









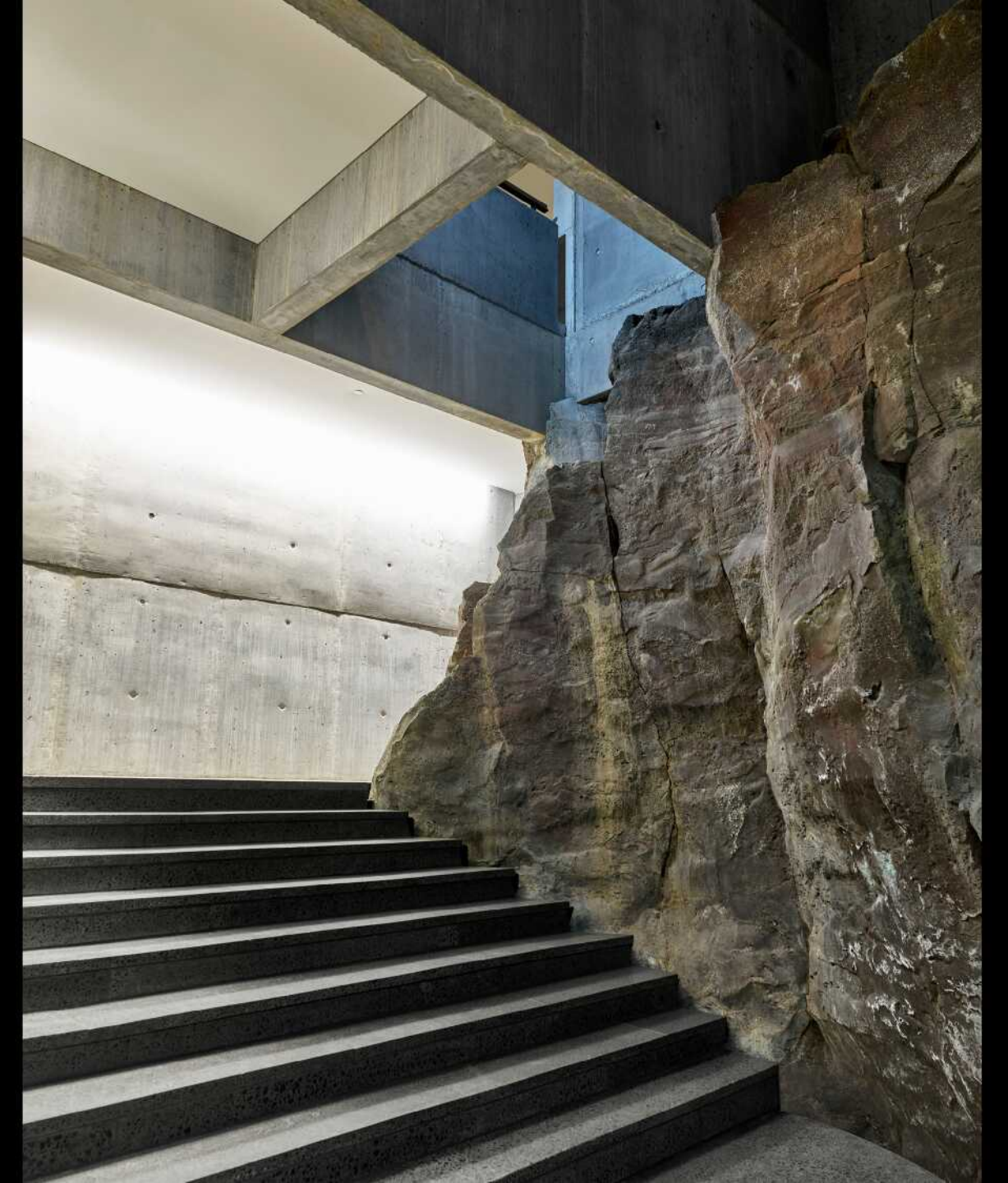
















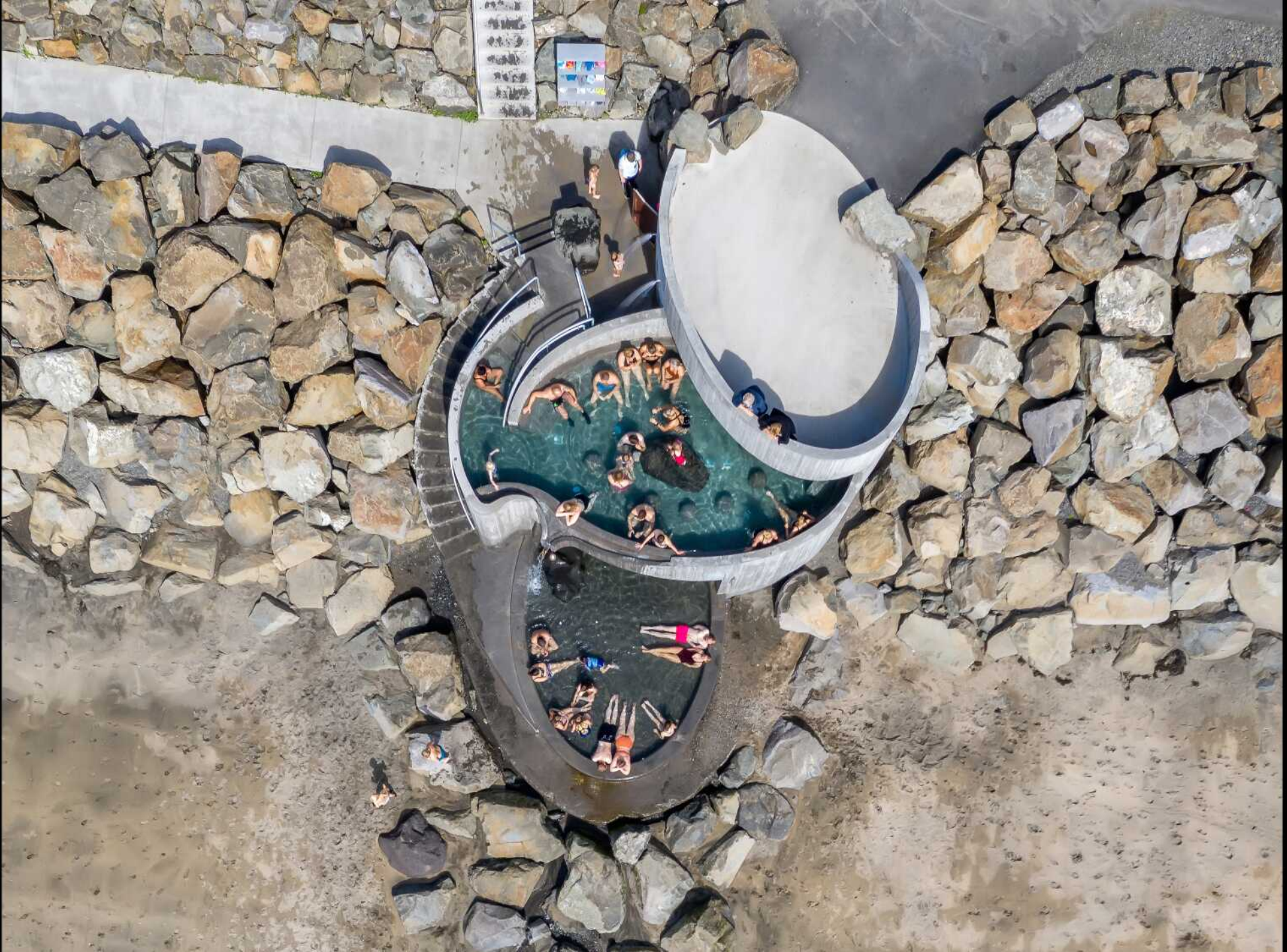






**“HERE, A MAN, AN  
AMPOULED STRAND,  
DISCOVERS HE HAS 10  
HAPPY TOES”**

François Simon





















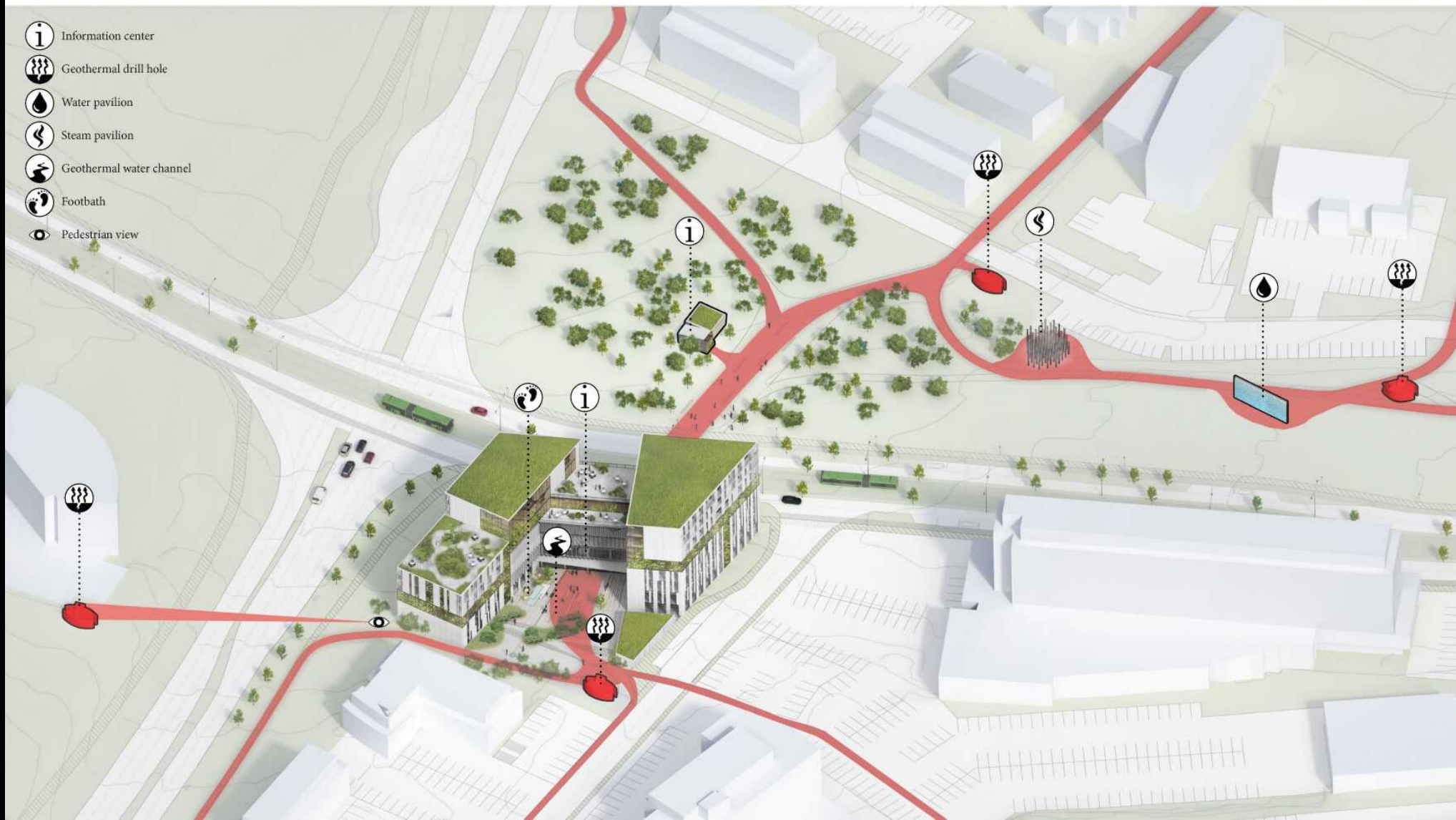






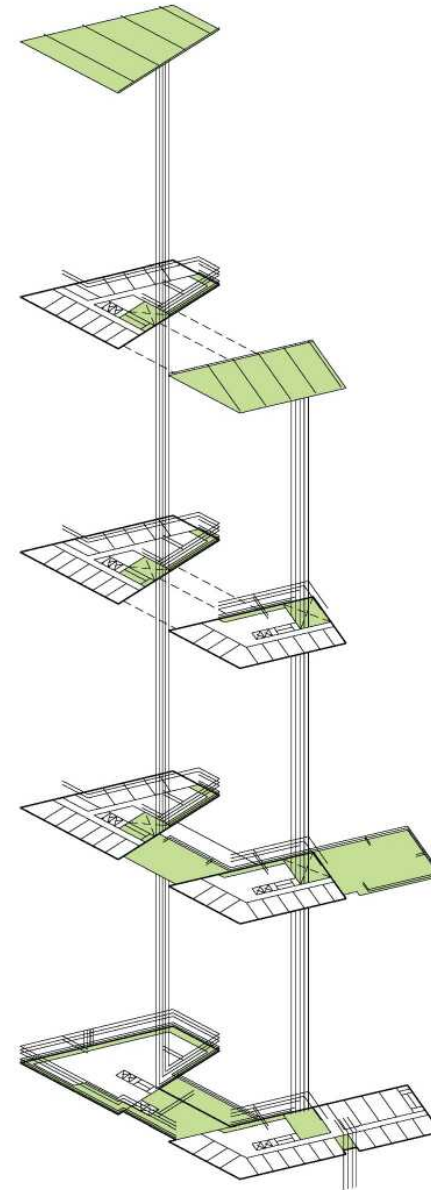
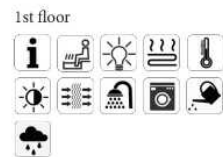
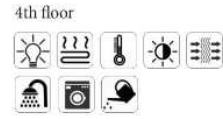
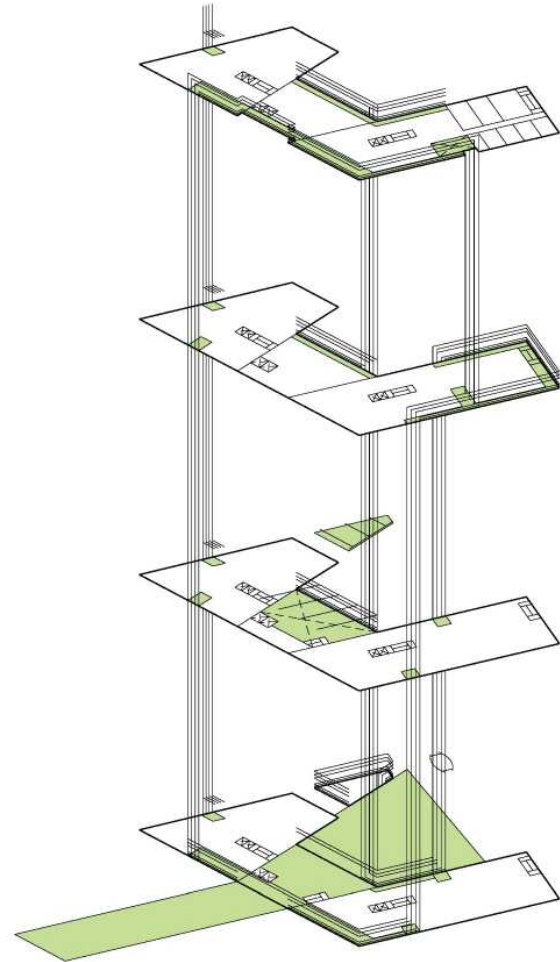


# Geothermal Park



# Geothermal integration strategies

-  Geothermal water pipes
-  Information
-  Geothermal energy
-  Recreation activities
-  Solar filtration
-  Air filtration
-  Geothermal heating
-  Cooling
-  Hot water supply
-  Home appliances
-  Irrigation
-  Rainwater management

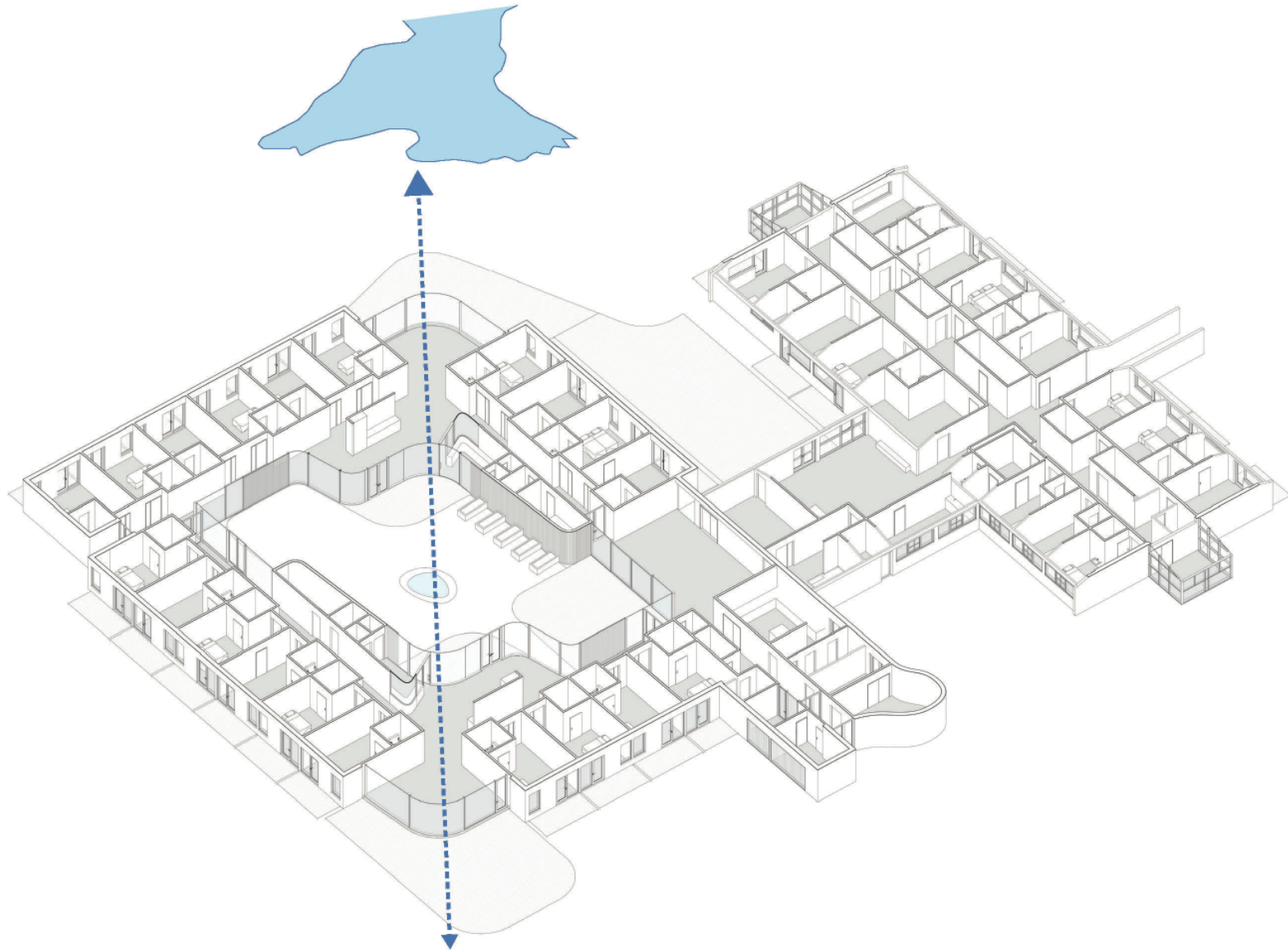


...



2019







Mæla

Lengd Svæði Heinsa

KORTMYND

- Elgnámörk LM
- Bæjarlindir & Deykjanen
- Svámýndir
- Vefmyndaveilar
- Ýmis kortagagn
- Ýmsar kortasjar

BæriskjáltaVirkeni

0 0 0 24t Viku

Teikna

Punktur Lína Svæði Texti Breyta Heinsa

Stærð Litur

Svarur Cripa



Mæla

Lengd Svæði Heimsa

KORTMYND

- Eignamörk LM
- Jarðeigar á Reykjanesi
- Skammtmyndir
- Vefmyndavélar
- Ýmis kortagögn
- Ýmsar kortasjar
- Jarðskjáltaúvikinni

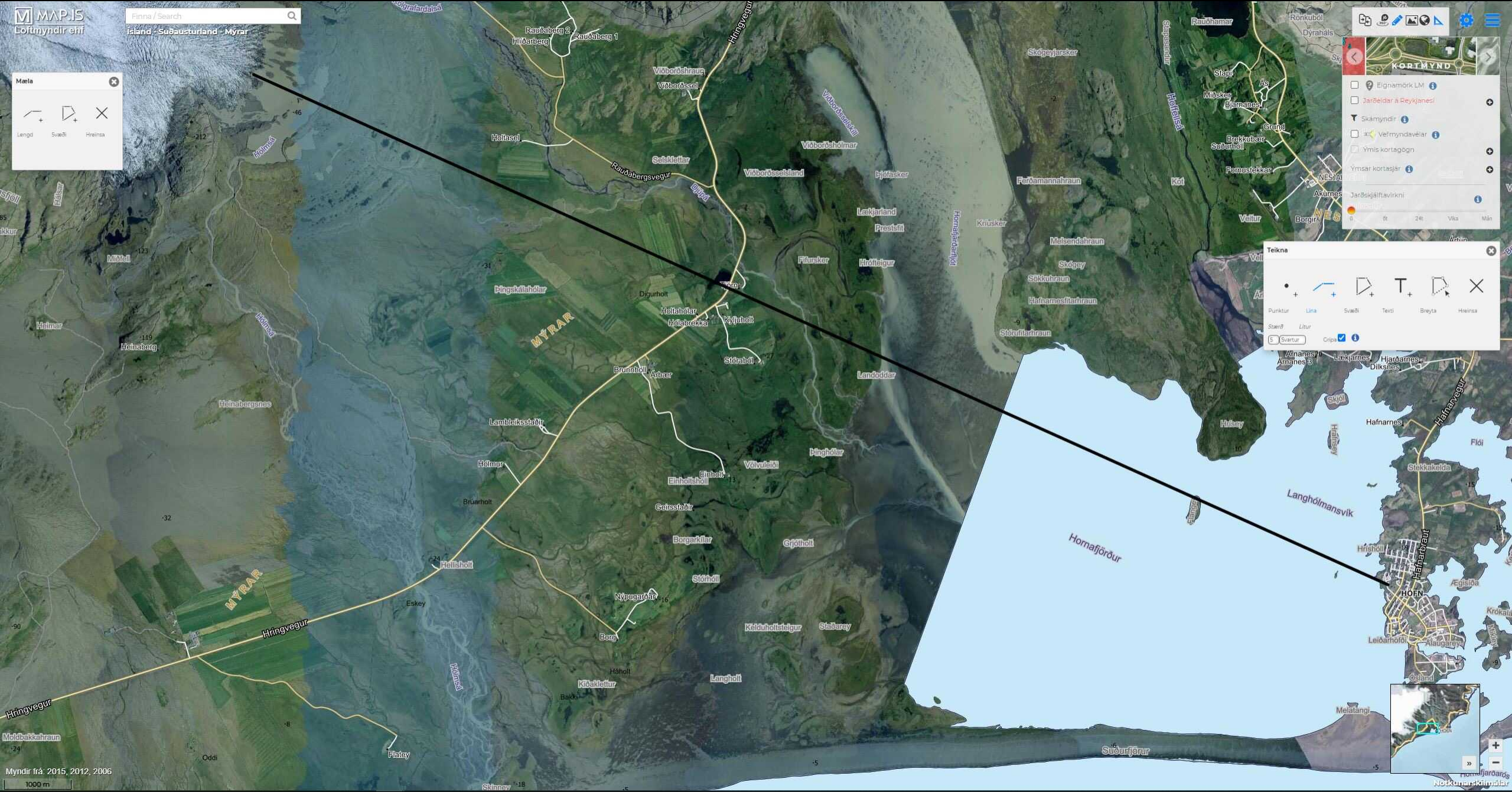
6. 0. 24. Vísu

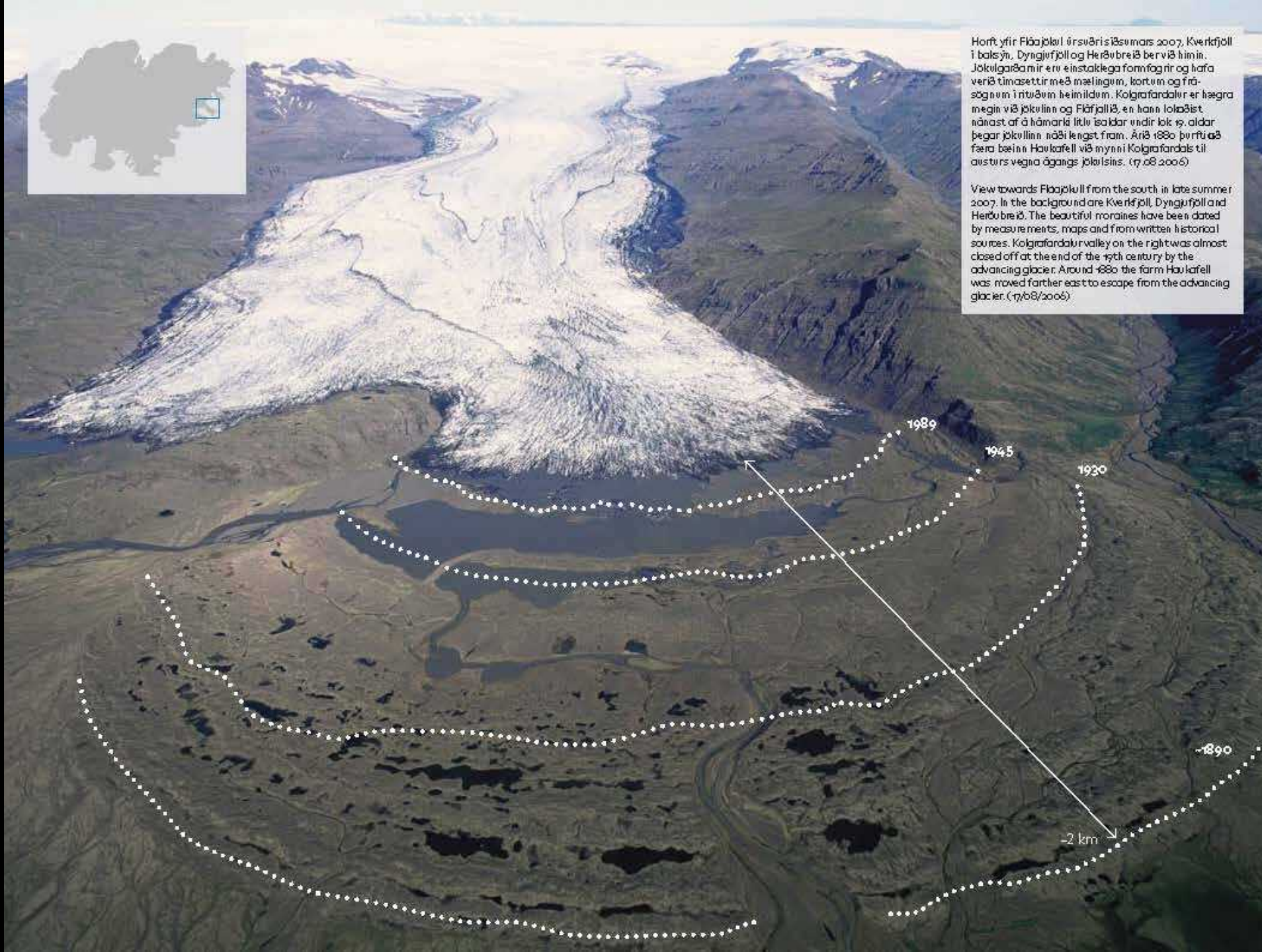
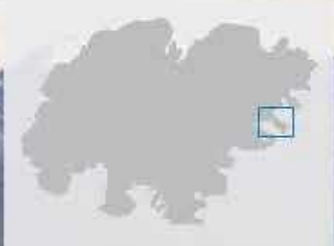
Teikna

Punktur Lína Svæði Texti Breyta Heimsa

Stærð Litur

E Svartur





Hort yfir Fláajökul úrsværisíðum mars 2007. Kverkfjöll í baki, Dyngufjöll og Herðubreið ber víð hinni. Jökulgarðarnir eru einstaklega formfagnir og hafa verið tímasettir með mælingum, kortum og frá-sögnum í rituðum heimildum. Kolgrafardalur er hægra megin við jökullinn og Fláajökull, en hann lokaðist nánast af á hámarki litlu ísaldar undir lok 19. aldar þegar jökullinn náði lengst fram. Árið 1880 þurfti að færa bæinn Haukafell víð megni Kolgrafardals til austurs vegna ágangs jökulsins. (17.08.2006)

View towards Fláajökull from the south in late summer 2007. In the background are Kverkfjöll, Dyngufjöll and Herðubreið. The beautiful moraines have been dated by measurements, maps and from written historical sources. Kolgrafardalur valley on the right was almost closed off at the end of the 19th century by the advancing glacier. Around 1880 the farm Haukafell was moved farther east to escape from the advancing glacier. (17/08/2006)

Mynd fengin úr:  
Hörfandi jöklar -  
Lifandi kennslustofa í  
Loftslagsbreytingum  
Vatnajökulsþjóðgarður  
2017

Mynd: RAX



An aerial photograph of a volcanic crater. The crater floor is covered in dark, jagged rocks and is partially filled with a light-colored, milky lake. In the center of the lake, there are several small, dark islands. The background shows a range of mountains, some with patches of snow or ice, under a dark, overcast sky. The overall tone of the image is dark and moody.

**2019**

## Bréf til framtíðarinnar

Ok er fyrsti nafnkunni jökullinn til að missa titil sinn.  
Á næstu 200 árum er talið að allir jöklar landsins fari sömu leið.  
Þetta minnismerki er til vitnis um að við vitum  
hvað er að gerast og hvað þarf að gera.  
Aðeins þú veist hvort við gerðum eitthvað.

## A letter to the future

Ok is the first Icelandic glacier to lose its status as a glacier.  
In the next 200 years all our glaciers are expected to follow the same path.  
This monument is to acknowledge that we know  
what is happening and what needs to be done.  
Only you know if we did it.

Ágúst 2019  
415ppm CO<sub>2</sub>

## Bréf til framtíðarinnar

Ok er fyrsti nafnunnur jökullinn til að missa titil sinn.

Á næstu 200 árum er talið að allir jöklar landsins fari sömu leið.

Þetta er einn ismerki er tilvísni um að við vitum

Aðeins þú veist hvort við gerðum eitthvað.

**„Við verðum að  
gera þetta saman:  
fyrir jöklana, fyrir  
framtíðina og fyrir  
okkur sjálf,“**

Agúst 2011  
415pm CS,

A dark, atmospheric landscape featuring a central pond surrounded by a textured, rocky terrain. In the background, there are snow-capped mountains under a heavy, overcast sky. The overall mood is somber and contemplative.

**„fyrir okkur sjálf“**